

CLAMPING FORCE LOAD CELL

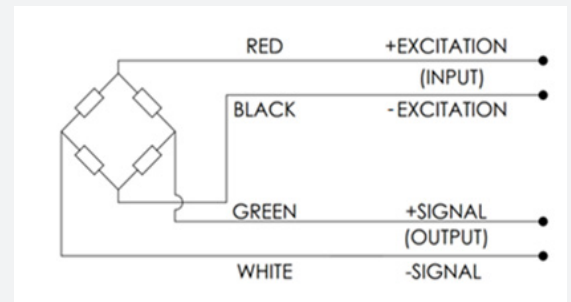
Clamping Force Load Cells are strain gauge based transducers with temperature compensation and excellent overall performance.

This type measures compressive loads up to 160kN with better than $\pm 2\%$ non-linearity. This low height and robust design is ideal for determining bolt preload.



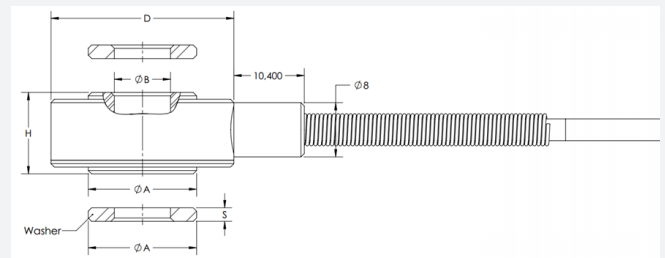
WIRING

- The load button is provided with 4x28 AWG wiring within a braided shielded cable (overall cable length 3m).
- Connector with integrated TEDS chip is available to order.



DIMENSIONS

MODEL	CAPACITY	A	B	D	H	S	THREAD
CFCL1	15kN	12	6.3	24	12	3	M6
CFCL1	30kN	16	8.3	27	12	3	M8
CFCL1	60kN	22	10.3	33	12	3	M10
CFCL1	80kN	26	12.3	37	15	4	M12
CFCL1	120kN	33	16.3	44	15	4	M16
CFCL1	160kN	39	20.3	50	15	5	M20



To find out more visit hitecsensors.com

HDS_CFCL_090120/01

 **HITECSENSORS**
A HUMANETICS COMPANY

CLAMPING FORCE LOAD CELL

SPECIFICATION

PARAMETER	RANGE	NOTES
Capacity (FS)	15, 30, 60, 80, 120 & 160kN	
Rated Output (RO)	1mV/V nom.	
Allowable Maximum Load	150% full scale	No effect on performance
Non-Linearity	± 2% of FS	
Hysteresis	± 2% of FS	
Repeatability	± 0.3% of RO	
Zero Balance	5% of RO max.	
Zero Temp. Coefficient	± 0.03% RO/°C	
Span Temp. Coefficient	± 0.03% RO/°C	
Compensated Temp. Range	-15°C to 70°C	Wider range available to order
Operating Temp. Range	-20°C to 80°C	Wider range available to order
IP Rating	IP65	
Bridge Resistance	350 ohm nom.	
Excitation	5V, 10V	

HITEC Sensor Developments, Inc. | 10 Elizabeth Drive
Chelmsford, MA 01824 | United States of America
T +1 978 742 9032 | F +1 978 742 9033

hitecsensors.com