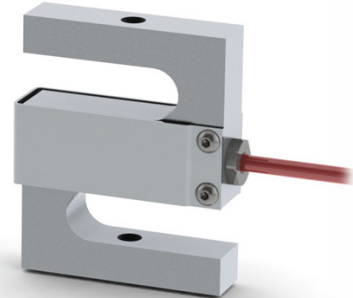


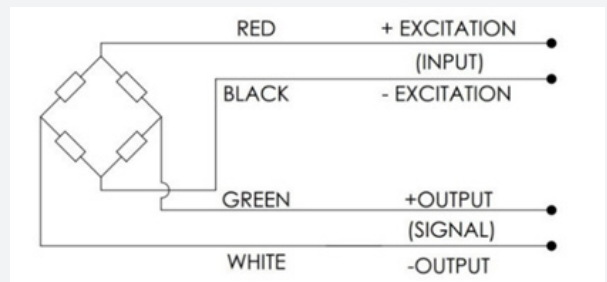
HIGH TEMPERATURE MINIATURE S-BEAM LOAD CELL

The HTSB Load Cell is a bi-directional Aluminum strain gauge based transducer with high performance, specially designed for high temperature applications. This design provides better than $\pm 0.05\%$ (full scale) non-linearity.



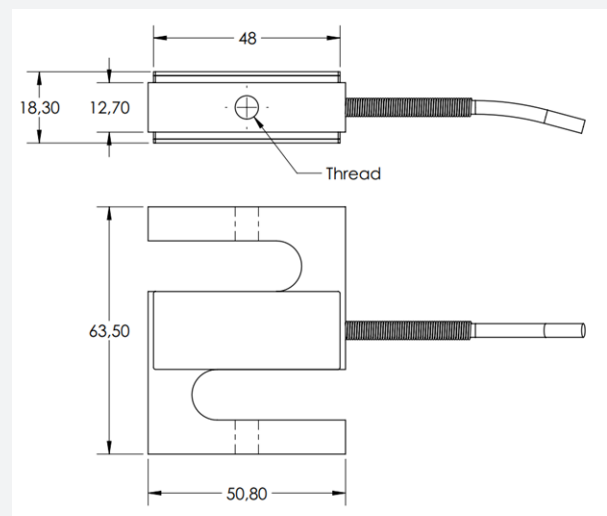
WIRING

- The HTSB load cell is provided with 4x22 AWG wiring within a braided shielded cable (overall cable length 15ft)



DIMENSIONS

MODEL	CAPACITY	THREAD
HTSB-M	50lbf	M6 x 1
HTSB-U	50lbf	1/4 - 28
HTSB-M	100lbf	M6 x 1
HTSB-U	100lbf	1/4 - 28
HTSB-M	150lbf	M6 x 1
HTSB-U	150lbf	1/4 - 28
HTSB-M	250lbf	M6 x 1
HTSB-U	250lbf	1/4 - 28



To find out more visit hitecsensors.com

HDS_HTSB_090120/01

 **HITECSENSORS**
A HUMANETICS COMPANY

HIGH TEMPERATURE MINIATURE S-BEAM LOAD CELL

SPECIFICATION

PARAMETER	RANGE
Rated Capacity (lbf)	50, 100, 150 & 250
Rated Output (RO)	3mV/V nom.
Safe Overload	150 % of RO
No Load Offset (Zero Balance)	±1% of RO
Excitation (VDC or VAC)	5V, 10V
Input Impedance	350 Ω nom.
Output Impedance	350 Ω nom.
Non-Linearity	±0.05% of RO
Hysteresis	±0.03% of RO
Non-Repeatability	±0.02% of RO
Temp. Shift Zero	±0.005% of RO/°F (±0.009 of RO/°C)
Temp. Shift Span	±0.005% of load/°F (±0.009 of load/°C)
Compensated Temp.	0 to 300 °F (-20 to 150 °C)
Operating Temp.	-65 to 320 °F (-50 to 160 °C)
Material	Aluminum
Calibration (std)	Tension

HITEC Sensor Developments, Inc. | 10 Elizabeth Drive
Chelmsford, MA 01824 | United States of America
T +1 978 742 9032 | F +1 978 742 9033

hitecsensors.com