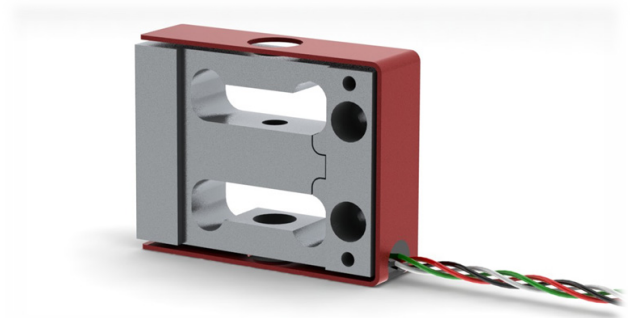


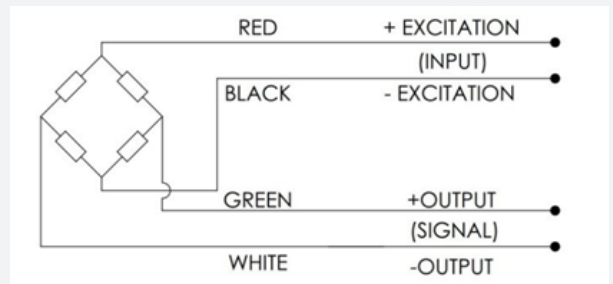
SIDE MOUNT LOAD CELL

The Side Mount Load Cell is a bi-directional strain gauge based transducer with high performance and built-in temperature compensation. This design provides better than $\pm 0.02\%$ (full scale) non-linearity.

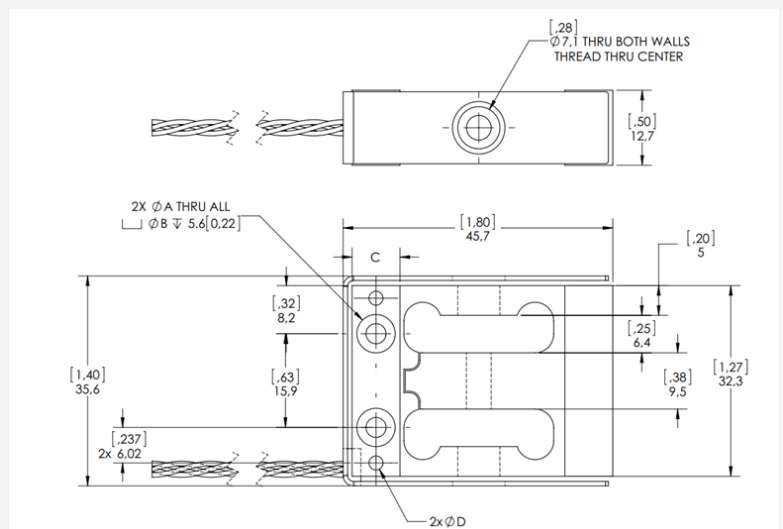


WIRING

- The OLP Beam LC is provided with 28 AWG wiring, overall cable length 6in (152.4mm)



DIMENSIONS



Dimensions continued on next page.

To find out more visit hitecsensors.com

 **HITECSENSORS**
A HUMANETICS COMPANY

SIDE MOUNT LOAD CELL

DIMENSIONS CONTINUED

MODEL	CAPACITY	THREAD	A	B	C	D	SAFE
ABLC-M	9.8N	M5 x 0.8 – 6H	3.4 [.13]	6.5 [.26]	8.13 [.32]	-	1112N
ABLC-U	2.2lb	#10-32 UNF-2B	3.6 [.14]	6.4 [.25]	8.13 [.32]	-	250lb
ABLC-M	22.2N	M5 x 0.8	3.4 [.13]	6.5 [.26]	8.13 [.32]	-	1112N
ABLC-U	5lb	#10-32 UNF-2B	3.6 [.14]	6.4 [.25]	8.13 [.32]	-	250lb
ABLC-M	44.5N	M5 x 0.8	3.4 [.13]	6.5 [.26]	8.13 [.32]	-	1112N
ABLC-U	10lb	#10-32 UNF-2B	3.6 [.14]	6.4 [.25]	8.13 [.32]	-	250lb
ABLC-M	111N	M5 x 0.8	3.4 [.13]	6.5 [.26]	8.13 [.32]	-	1112N
ABLC-U	25lb	#10-32 UNF-2B	3.6 [.14]	6.4 [.25]	8.13 [.32]	-	250lb
ABLC-M	222N	M5 x 0.8	3.4 [.13]	6.5 [.26]	8.13 [.32]	-	1112N
ABLC-U	50lb	#10-32 UNF-2B	3.6 [.14]	6.4 [.25]	8.13 [.32]	-	250lb
ABLC-M	1445N	M5 x 0.8	3.4 [.13]	6.5 [.26]	8.13 [.32]	-	1112N
ABLC-U	100lb	#10-32 UNF-2B	3.6 [.14]	6.4 [.25]	8.13 [.32]	-	250lb
ABLC-M	890N	M5 x 0.8	3.4 [.13]	6.5 [.26]	8.13 [.32]	2.38 [.094]	1780N*
ABLC-U	200lb	#10-32 UNF-2B	3.6 [.14]	6.4 [.25]	8.13 [.32]	2.38 [.094]	400lb*
ABLC-M	2224N	M6 x 1	4.5 [.18]	8 [.31]	10.16 [.4]	2.38 [.094]	4450N*
ABLC-U	500lb	¼ - 28 UNF – 2B	5.3 [.21]	8.6 [.34]	10.16 [.4]	2.38 [.094]	1000lb*

* with additional pins

To find out more visit hitecsensors.com

Copyright © HITEC Sensors 2020. This flyer is indicative only. Contact HITEC directly for details.

 **HITECSENSORS**
A HUMANETICS COMPANY

SIDE MOUNT LOAD CELL

SPECIFICATION

PARAMETER	RANGE
Rated Capacity	2.2 - 500lbf [9.8N-2224N]
Rated Output (RO)	2mV/V nom.
No Load Offset (Zero Balance)	±3% of RO
Excitation (VDC or VAC)	5V, 10V
Input Impedance	1000 Ω nom.
Output Impedance	1000 Ω nom.
Non-Linearity	±0.02% of R. (2.2-100lbf) ±0.06% of RO (200-500lbf)
Hysteresis	±0.02% of RO (2.2-100lbf) ±0.06% of RO (200-500lbf)
Non-Repeatability	±0.02% of RO
Temp. Shift Zero	±0.005% of RO/°F (±0.009 of RO/°C)
Temp. Shift Span	±0.005% of load/°F (±0.009 of load/°C)
Compensated Temp.	5 to 160°F (-15 to 71°C)
Operating Temp.	-60 to 200°F (-51 to 93°C)
Material	Aluminum (2.2-100lbf), SS (200lbf-500lbf)
Calibration Test Excitation	5V (recommended), 10V max.
Calibration (std.)	2 pt. tension

HITEC Sensor Developments, Inc. | 10 Elizabeth Drive
Chelmsford, MA 01824 | United States of America
T +1 978 742 9032 | F +1 978 742 9033

hitecsensors.com