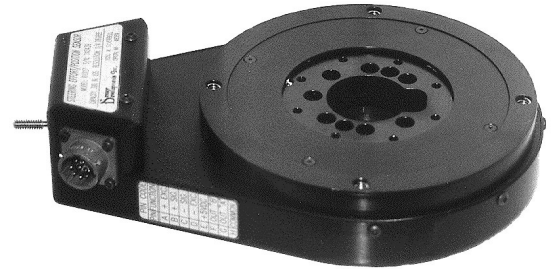


IN-LINE STEERING EFFORT SENSOR

This low profile In-Line Steering Effort Sensor (01227) is installed in line with the steering column and is virtually unnoticed by the driver.

In-Line Steering Effort Sensor is used to evaluate steering torque and angle in new and existing steering systems and components in automobiles, trucks, and buses.

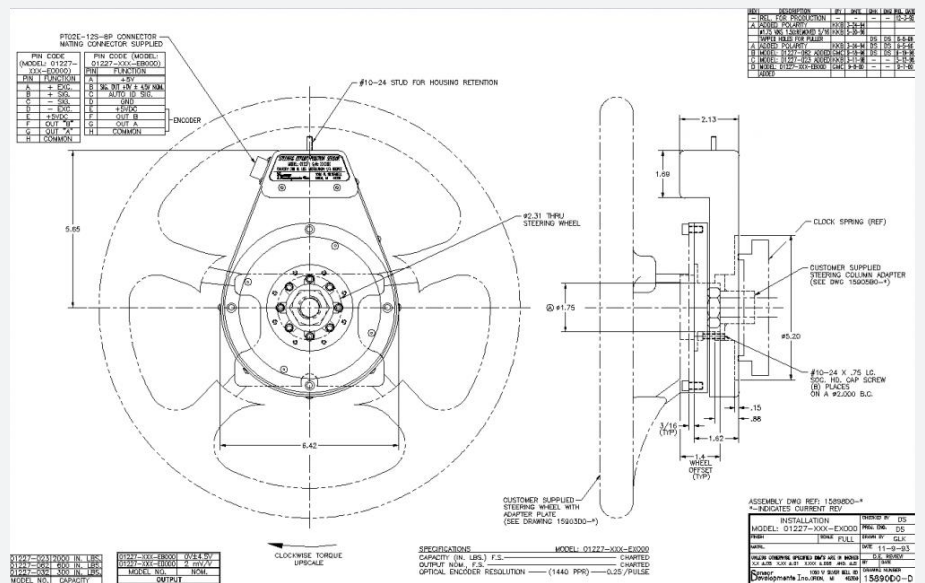


FEATURES

Optional Features

- Encoder to analog convertor
- High level analog torque signal output
- Steering column adapter plates
- Replace encoder with 10kohm potentiometer

DIAGRAM



To find out more visit hitecsensors.com

HDS_01227_112420/01

IN-LINE STEERING EFFORT SENSOR

SPECIFICATION

PARAMETER	RANGE
Capacity (in. lbs.)	300 - 2000
Output (FS)	2.0 mV/V nom.
Torque Accuracy (FS)	± 0.1%
Optical Encoder Resolution (1440 PPR)	0.25°/pulse
Compensated Temperature (°F)	70 to 170
Useable Temperature (°F)	-65 to +250
Temperature Effect on Zero (FS/°F)	0.002%
Temperature Effect on Span (Rdg./°F)	0.002%
Bridge Resistance (Ohms)	350
Maximum Excitation Voltage (Vdc)	20
Excitation/Signal Transmission	Slip ring coupled

HITEC Sensor Developments, Inc. | 10 Elizabeth Drive
Chelmsford, MA 01824 | United States of America
T +1 978 742 9032 | F +1 978 742 9033

hitecsensors.com